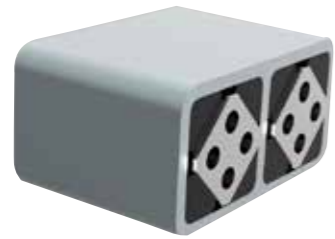
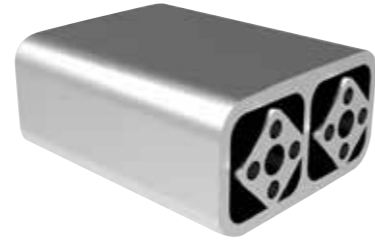


# Gummifederlement Typ LTD-A

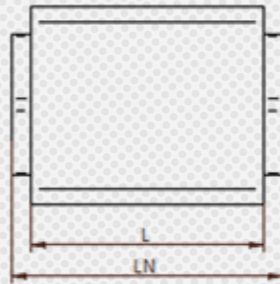
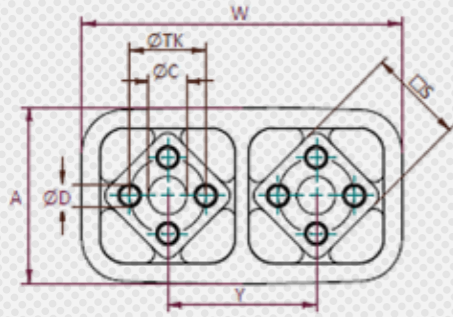
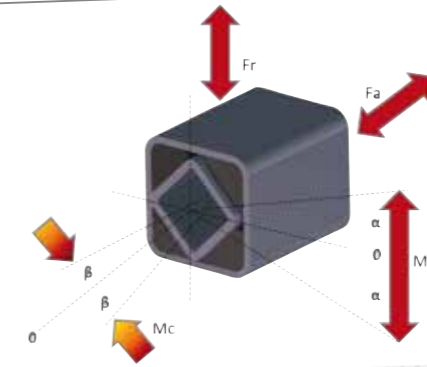
# Rubber Suspension Unit Type LTD-A



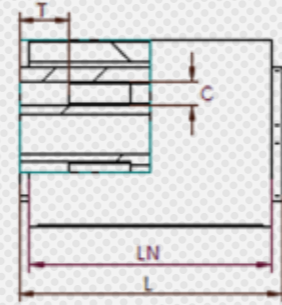
Grösse/Size  
5/6



Grösse/Size  
7/8



Grösse/Size  
5/6



Grösse/Size  
7/8

### RESATEC-Gummifederlement Typ LTD-A:

Das Innenprofil Typ A ermöglicht die Befestigung mit Schrauben. Bis zum Typ LTD-A 7 sind durchgehende Schrauben zu verwenden (Qualität 8.8) und ab dem Typ LTD-A 8 sind im Innenprofil Gewinde vorhanden.

Eine weitere einfache Adaptions-Möglichkeit bietet der RESATEC-Montagewinkel vom Typ MA.

Das Doppелеlement wird zur Realisierung von Serie- oder Parallelschaltungen verwendet.

### RESATEC-Rubber Suspension Unit Type LTD-A:

The core profile type A allows the possibility of fixation with screws. threads are available in the core profile.

Another simple adaption option offers the RESATEC-Mounting Support Type MA.

The double element will be used for the realization of series- or parallel connection.

Abmasse / Dimensions / Material																	
Typ Type	Art. Nr. Art. No.	W	A	□S	LN	L	øTK	øD	T	G	Y	øC	Gewicht Weight [kg]	Material Deklaration / Declaration			Bevorratung stocking am Lager on stock X
		[mm]	[mm]	[mm]	[mm]	[mm]	[mm]	[mm]	[mm]	[mm]	[mm]	[mm]		Aussenprofil outer profile	Innenprofil core profile	Gummi rubber	
LTD-A 5 - 40	562 550 40	93	49	27	40	45	20	8	Durchgangsbohrung / through bore-hole	-	45	-	0.34	Aluminium	Aluminium	Best. auf SBR / Mischung Code C SBR based / mixture code C	X
LTD-A 5 - 60	562 550 60				60	65							0.51				X
LTD-A 5 - 100	562 551 00				100	105							0.83				X
LTD-A 6 - 60	562 560 60	126	66	38	60	70	25	10	-	60	-	0.96	Aluminium	Aluminium	Best. auf SBR / Mischung Code C SBR based / mixture code C	X	
LTD-A 6 - 80	562 560 80				80	90						1.25				X	
LTD-A 6 - 120	562 561 20				120	130						1.85				X	
LTD-A 7 - 80	562 570 80	149	84	45	80	90	35	12	Durchgangsbohrung / through bore-hole	-	72	16.5	1.77	Aluminium	Aluminium	Best. auf SBR / Mischung Code C SBR based / mixture code C	X
LTD-A 7 - 100	562 571 00				100	110							2.19				X
LTD-A 7 - 150	562 571 50				150	160							3.25				X
LTD-A 8 - 120	562 581 20	168	92.5	50	120	130	40	12.25	25	ø10 + M12x30	78	20.5	3.47	Aluminium	Aluminium	Best. auf SBR / Mischung Code C SBR based / mixture code C	X
LTD-A 8 - 160	562 581 60				160	170							4.61				X
LTD-A 8 - 200	562 582 00				200	210							5.74				X
LTD-A 8 - 240	562 582 40				240	250							6.88				X
LTD-A 8 - 320	562 583 20				320	330							9.15				X

Leistungsparameter / power values																								
Typ Type	Art. Nr. Art. No.	M <sub>c</sub> @ β +/- 1° [Nm]	Radial		Axial		Drehmoment und max. Erregerfrequenz beim Winkel α Torque and max. excitation frequency at the angle α																	
			Federweg deflection S <sub>r</sub> [mm]	Belastung load F <sub>r</sub> [N]	Federweg deflection S <sub>a</sub> [mm]	Belastung load F <sub>a</sub> [N]	α +/- 4°		α +/- 8°		α +/- 12°		α +/- 16°		α +/- 20°		α +/- 24°		α +/- 28°		α +/- 32°			
			[Nm]	[mm]	[N]	[mm]	[Nm]	min <sup>-1</sup>	[Nm]	min <sup>-1</sup>	[Nm]	min <sup>-1</sup>	[Nm]	min <sup>-1</sup>	[Nm]	min <sup>-1</sup>	[Nm]	min <sup>-1</sup>	[Nm]	min <sup>-1</sup>	[Nm]	min <sup>-1</sup>	[Nm]	min <sup>-1</sup>
LTD-A 5 - 40	562 550 40	3.99		888		217	4.01		8.22		13.1		19.2		27.0		37.0		49.7		65.5			
LTD-A 5 - 60	562 550 60	12.01	0.5	1'333	0.5	325	6.02	990	12.4	300	19.8	170	29.0	110	40.9	68	56.2	43	75.6	30	100	10		
LTD-A 5 - 100	562 551 00	49.9		2'221		542	10.0		20.6		32.9		48.3		67.9		93.2		125		166			
LTD-A 6 - 60	562 560 60	11.74		1'564		372	11.3		23.7		38.5		56.7		79.6		108		144		188			
LTD-A 6 - 80	562 560 80	25.4	0.5	2'086	0.5	497	15.1	900	31.7	280	51.4	150	75.9	92	107	57	145	38	194	28	253	10		
LTD-A 6 - 120	562 561 20	78.3		3'130		745	22.6		47.5		77.1		114		160		218		291		380			
LTD-A 7 - 80	562 570 80	27.0		2'196		536	22.7		47.1		75.3		110		152		206		272		353			
LTD-A 7 - 100	562 571 00	52.2	0.5	2'745	0.5	669	28.4	850	58.9	250	94.1	150	137	86	190	57	256	36	338	26	439	10		
LTD-A 7 - 150	562 571 50	135		4'063		991	42.1		87.8		141		206		286		385		508		658			
LTD-A 8 - 120	562 581 20	89.5		3'442		840	72.9		139.5		209		289		390		519		685		898			
LTD-A 8 - 160	562 581 60	115.8		4'617		1'126	97.8		187.2		280		388		523		696		920		1'206			
LTD-A 8 - 200	562 582 00	288	0.5	5'772	0.5	1'408	122.2	840	234	250	350	150	485	85	654	53	870	36	1'150	24	1'506	10		
LTD-A 8 - 240	562 582 40	605		6'919		1'688	146.5		281		420		582		784		1'044		1'379		1'807			
LTD-A 8 - 320	562 583 20	1'677		9'231		2'252	195.4		374		560		776		1'046		1'393		1'840		2'411			

