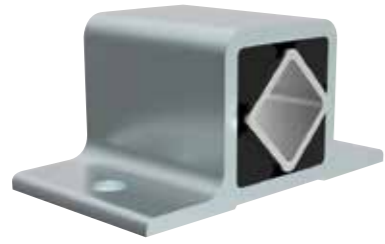


Gummifederlement Typ LTB-S

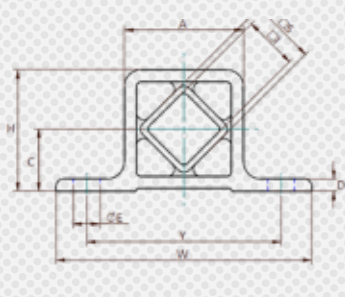
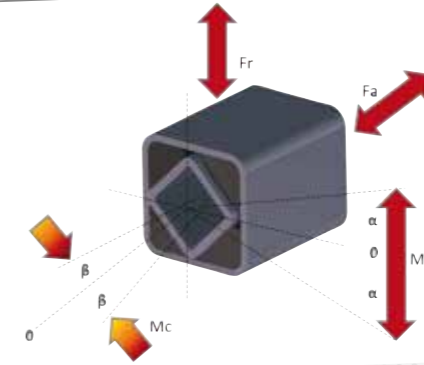
Rubber Suspension Unit Type LTB-S



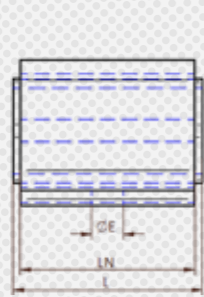
Grösse/Size
3/5/6/7



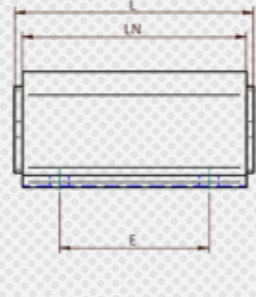
Grösse/Size
8



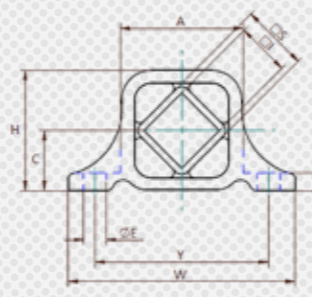
Grösse/Size
3/5/6/7



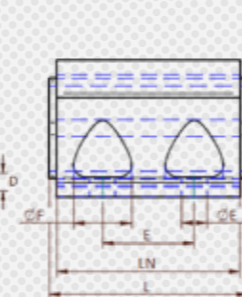
Grösse/Size
3-40/5-40/5-60
6-60



Grösse/Size
5-100/6-80
6-120/7



Grösse/Size
8



RESATEC-Gummifederlement Typ LTB-S:

Das Innenprofil Typ S ermöglicht eine Steckverbindung. Die Einstecktiefe des gesteckten Vierkantes soll mindestens 1.8 x länger als der Materialquerschnitt [Mess $\square I$] sein. Als Vierkant soll ein blanker Stahl mit der Toleranz h11 und facettierten Ecken verwendet werden.

Das Aussengehäuse kann durch die Befestigungslöcher in der Flanschpartie direkt befestigt werden. Bei jedem Befestigungsloch muss eine Schraube mit der Qualität 8.8 verwendet werden.

Eine wechselseitige Auslenkung über die Element-Nulllage ist nicht möglich.

RESATEC-Rubber Suspension Unit Type LTB-S:

The core profile type S allows a plug connection. The insertion depth of the plugged square profile, should be at least 1.8 x longer than the cross section of the material [measurement $\square I$]. A blank steel square profile with the tolerance of h11 and chamfered edges is to use.

The outer casing will fixed directly through the holes in the flange. A screw quality 8.8 must be used for each one mounting of the holes.

An alternating movement over the elements zero position is impossible.

Abmasse / Dimensions / Material																Material			Bevorratung
Typ Type	Art. Nr. Art. No.	A	W	H	C	D	$\square S$	LN	L	$\square I$	E	ϕE	Y	ϕF	Gewicht Weight [kg]	Deklaration / Declaration			am Lager on stock X
		[mm]	[mm]	[mm]	[mm]	[mm]	[mm]	[mm]	[mm]	[mm]	[mm]	[mm]	[mm]	[mm]		Aussenprofil outer profile	Innenrohr core square tube	Gummi rubber	
LTB-S 3-40	561 430 40	27	65	30	15	4	15	40	45	11	-	7	50	-	2.18	SINT-C 40			
LTB-S 5-40	561 450 40							40	45		-				0.24				
LTB-S 5-60	561 450 60	49	105	50	25.5	5	27	60	65	22	-	11	80	-	0.35				
LTB-S 5-100	561 451 00							100	105		60				0.57				
LTB-S 6-60	561 460 60							60	70		-				0.65				
LTB-S 6-80	561 460 80	66	125	67	34	6	38	80	90	30	40	13	100	-	0.83				
LTB-S 6-120	561 461 20							120	130		80				1.24				
LTB-S 7-80	561 470 80							80	90		40				1.20				
LTB-S 7-100	561 471 00	80	145	77	38.4	8	45	100	110	35	65	13	115	-	1.49				
LTB-S 7-150	561 471 50							150	160		2 x 60				2.18				
LTB-S 8-120	561 481 20							120	130		60				2.55				
LTB-S 8-160	561 481 60							160	170		2 x 60				3.35				
LTB-S 8-200	561 482 00	80	170	90	45	13	50	200	210	40	2 x 70	17	130	38	4.23				
LTB-S 8-240	561 482 40							240	250		3 x 60				5.03				
LTB-S 8-320	561 483 20							320	330		4 x 60				6.78				

Leistungsparameter / power values																						
Typ Type	Art. Nr. Art. No.	M_c $\beta \pm 1^\circ$ [Nm]	Radial		Axial		Drehmoment und max. Erregerfrequenz beim Winkel α Torque and max. excitation frequency at the angle α															
			Federweg deflection S_r [mm]	Belastung load F_r [N]	Federweg deflection S_a [mm]	Belastung load F_a [N]	$\alpha \pm 4^\circ$	$\alpha \pm 8^\circ$	$\alpha \pm 12^\circ$	$\alpha \pm 16^\circ$	$\alpha \pm 20^\circ$	$\alpha \pm 24^\circ$	$\alpha \pm 28^\circ$	$\alpha \pm 32^\circ$								
			[Nm]	[N]	[mm]	[N]	[Nm]	min ⁻¹	[Nm]	min ⁻¹	[Nm]	min ⁻¹	[Nm]	min ⁻¹	[Nm]	min ⁻¹	[Nm]	min ⁻¹	[Nm]	min ⁻¹		
LTB-S 3-40	561 430 40	2.00	0.25	343	0.25	111	1.00	1'100	2.20	330	3.50	190	5.10	120	7.00	72	9.20	46	11.7	33	14.7	10
LTB-S 5-40	561 450 40	3.99		888		217	4.01		8.22		13.1		19.2		27.0		37.0		49.7		65.5	
LTB-S 5-60	561 450 60	12.01	0.5	1'333	0.5	325	6.02	900	12.4	300	19.8	170	29.0	110	40.9	68	56.2	43	75.6	30	100	10
LTB-S 5-100	561 451 00	49.9		2'221		542	10.0		20.6		32.9		48.3		67.9		93.2		125		166	
LTB-S 6-60	561 460 60	11.74		1'564		372	11.3		23.7		38.5		56.7		79.6		108		144		188	
LTB-S 6-80	561 460 80	25.4	0.5	2'086	0.5	497	15.1	900	31.7	280	51.4	150	75.9	92	107	57	145	38	194	28	253	10
LTB-S 6-120	561 461 20	78.3		3'130		745	22.6		47.5		77.1		114		160		218		291		380	
LTB-S 7-80	561 470 80	27.0		2'196		536	22.7		47.1		75.3		110		152		206		272		353	
LTB-S 7-100	561 471 00	52.2	0.5	2'745	0.5	669	28.4	850	58.9	250	94.1	150	137	86	190	57	256	36	338	26	439	10
LTB-S 7-150	561 471 50	135		4'063		991	42.1		87.8		141		206		286		385		508		658	
LTB-S 8-120	561 481 20	89.5		3'442		840	72.9		139.5		209		289		390		519		685		898	
LTB-S 8-160	561 481 60	115.8		4'617		1'126	97.8		187.2		280		388		523		696		920		1'206	
LTB-S 8-200	561 482 00	288	0.5	5'772	0.5	1'408	122.2	840	234	250	350	150	485	85	654	53	870	36	1'150	24	1'506	10
LTB-S 8-240	561 482 40	605		6'919		1'688	146.5		281		420		582		784		1'044		1'379		1'807	
LTB-S 8-320	561 483 20	1'677		9'231		2'252	195.4		374		560		776		1'046		1'393		1'840		2'411	

